



Michael French

New Reflections

Kinsman Robinson Galleries

Michael French

New Reflections

Kinsman Robinson Galleries
October 15 - November 12, 2011



Up Lake Rosseau from Sandy Bay, 2011



Little Agustinillo, 2010



This Rock Within the Sea, 2010





Erika on Zipolite, 2010



Veronica and the Pacific, 2010



Perpetual Motion, 2011



The Blue, Blue Sea, 2010



La Colorada, 2010

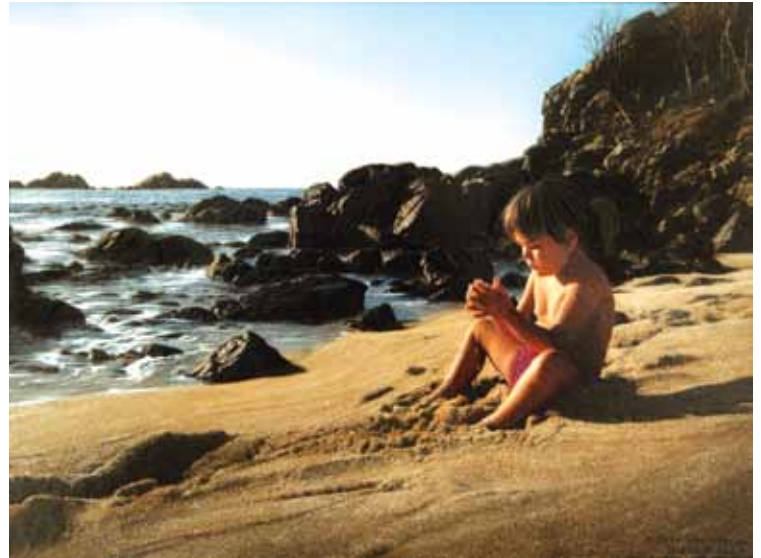




Indelibly Stamped, 2011



Sophia At Dawn, 2010



In the Early Morning Sun, 2011





Sun Setting on Icons, 2010



Late Afternoon Memories, 2011



Erika and Ping Pong, 2011

NEW WORKS

- * *Erika and Ping Pong*, 2011, Oil and acrylic on panel, 18 x 30 in, 45.72 x 76.2 cm
- * *Erika on Zipolite*, 2010, Oil and acrylic on panel, 18 x 30 in, 45.72 x 76.2 cm
- * *Eternal Progression*, 2010, Oil and acrylic on panel, 14 x 20 in, 35.56 x 50.8 cm
I Can See Clearly Now, The Rain Has Gone, 2010, Oil and acrylic on panel, 14 x 20 in, 35.56 x 50.8 cm
- * *In the Early Morning Sun*, 2011, Oil and acrylic on panel, 9 x 12 in, 22.86 x 30.48 cm
- * *Indelibly Stamped*, 2011, Oil and acrylic on panel, 9 x 12 in, 22.86 x 30.48 cm
Jacarandas, 2011, Oil and acrylic on panel, 20 x 30 in, 50.8 x 76.2 cm
Jaquars and Lillies, 2011, Oil and acrylic on panel, 20 x 30 in, 50.8 x 76.2 cm
- * *La Capilla San Agustinillo*, 2010, Oil and acrylic on panel, 14 x 20 in, 35.56 x 50.8 cm
- * *La Colorada*, 2010, Oil and acrylic on panel, 14 x 20 in, 35.56 x 50.8 cm
- * *La Playa Tranquila*, 2011, Oil and acrylic on panel, 18 x 30 in, 45.72 x 76.2 cm
- * *Lake Rosseau*, 2010, Oil and acrylic on panel, 14 x 20 in, 35.56 x 50.8 cm
- * *Late Afternoon Memories*, 2011, Oil and acrylic on panel, 20 x 30 in, 50.8 x 76.2 cm
- * *Little Agustinillo*, 2010, Oil and acrylic on panel, 14 x 20 in, 35.56 x 50.8 cm
- * *October Colours Rosseau*, 2011, Oil and acrylic on panel, 18 x 30 in, 45.72 x 76.2 cm
- * *Perpetual Motion*, 2011, Oil and acrylic on panel, 18 x 30 in, 45.72 x 76.2 cm
- * *Pescadores Puerto Angel*, 2010, Oil and acrylic on panel, 14 x 20 in, 35.56 x 50.8 cm
- * *Pussy Puerto Angel*, 2011, Oil and acrylic on panel, 9 x 12 in, 22.86 x 30.48 cm
Rosseau Gull Island, 2010, Oil and acrylic on panel, 14 x 20 in, 35.56 x 50.8 cm
- * *Sophia At Dawn*, 2010, Oil and acrylic on panel, 14 x 20 in, 35.56 x 50.8 cm
- * *Sun Setting on Icons*, 2010, Oil and acrylic on panel, 14 x 20 in, 35.56 x 50.8 cm

- Sun Up, Sandy Bay*, 2010, Oil and acrylic on panel, 14 x 20 in, 35.56 x 50.8 cm
- * *The Blue, Blue Sea*, 2010, Oil and acrylic on panel, 14 x 20 in, 35.56 x 50.8 cm
- * *The Earth, Sea and Sky*, 2010, Oil and acrylic on panel, 36 x 60 in, 91.44 x 152.4 cm
The Kiss of Coming Winter, 2010, Oil and acrylic on panel, 9 x 12 in, 22.86 x 30.48 cm
The Twin Islands, 2011, Oil and acrylic on panel, 20 x 30 in, 50.8 x 76.2 cm
- * *This Rock Within the Sea*, 2010, Oil and acrylic on panel, 14 x 20 in, 35.56 x 50.8 cm
Up Lake Rosseau from Sandy Bay, 2011, Oil and acrylic on panel, 20 x 30 in, 50.8 x 76.2 cm
Valley of the Ten Peaks, 2008, Oil and acrylic on panel, 8.5 x 11.75 in, 21.59 x 29.85 cm
Veronica and the Pacific, 2010, Oil and acrylic on panel, 14 x 20 in, 35.56 x 50.8 cm

SELECTED COLLECTIONS

The Prince of Wales and The Duchess of Cornwall; Hon. Prime Minister Brian and Mila Mulrone; George Bush Presidential Library and Museum; President Felipe Calderón de México; Forbes, Inc.; Forbes Highlander V; Scotiabank; CIBC; CIT Group; AGF Management; RBC Dominion Securities; Davies, Ward, Phillips & Vineberg LLP; Gordon Securities; Heenan Blakie; YMG Capital Management; Hiram Walker; Lloyds TSB; Great-West Life; McCarthy Tetrault LLP; Borealis Group; RBC Financial Group; CAE Industries; Xerox Corp; Manulife/John Hancock; SNC-Lavalin; Connor, Clark & Lunn; Scott Beattie, Owner and CEO of Elizabeth Arden Cosmetics; William M. Tatham Chairman & CEO of NexJ Systems; Jeanne Becker, Fashion Television; Hon. John Aird; Anne Murray, Singer; Christopher and Astrid Forbes; David Sobey; Garnet Watchorn, President Graywoods; William and Donna Lovatt, CFO London Life and Great West Life; Irving Ungerman, Philanthropist; Jean Paul Leroy, Seprim Paris; Warren Thomson, Executive Vice-President John Hancock Financial ; Robert Foster President, Canada Capital; Timothy Danson, Trial Lawyer; Ron Joyce, founder Tim Hortons; Pierre Hartley Richardson, Richardson and Sons

Please note that the asterisk [*] denotes that the work is illustrated in the catalogue.



ON THE COVER: *Lake Rosseau, 2010*

Printing by F.W. Barrett. Printed in Canada
Graphic Design by Dale Barrett

All rights reserved.

No part of this catalogue covered by the copyrights herein may be reproduced or copied in any form or by any means—electronic, graphic, digital or mechanical, including photocopying or information storage & retrieval systems—without the express prior written permission of the publisher.

Pussy Puerto Angel, 2011



Kinsman Robinson Galleries

108 Cumberland Street
Toronto, ON, Canada M5R 1A6

T: 416-964-2374

info@kinsmanrobinson.com

www.kinsmanrobinson.com