



KINSMAN ROBINSON GALLERIES

NORVAL MORRISSEAU

Early Paper & Birch Bark

NORVAL
MORRISSEAU

Early Paper & Birch Bark

November 19 – December 17, 2011

KINSMAN ROBINSON GALLERIES

There was an old women [sic] who was so strongly attached to the power of his [sic] spirit protector the huge serpent. All her life she has saved these near death back to health and herself by the power of the serpent; for I will give you supernatural powers all your life - many time the blk robe's tried to convert her to Christianity but fail in there [sic] effords [sic]. One day the power of the serpent failed to give power to heal etc, she was one hundred years old - that year she except [sic] Christainity [sic] and died, 102 at Gull Bay, Ont -

Norval Morrisseau

There Was An Old Woman Who Was So Strongly Attached To The Power of His Spirit Protector The Huge Serpent, c. 1960-64





Ojibwa Midawin Sacred Bear, c. 1959-62



Birds Nesting, c. 1966



Birds And Insects, c. 1966



Sacred Owl, c. 1966



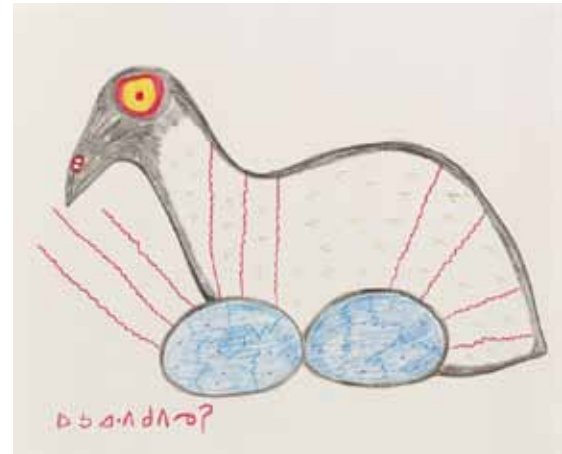
Owl With Power Lines, c. 1966



Three Birds With Peace Sun, c. 1966



Three Herons In Reeds, c. 1966



Twin Eggs Hatching, c. 1966



Blue Eggs, c. 1966



Loons Swimming, c. 1965



Three Birds Nesting, c. 1966



Thunderbird God, c. 1966



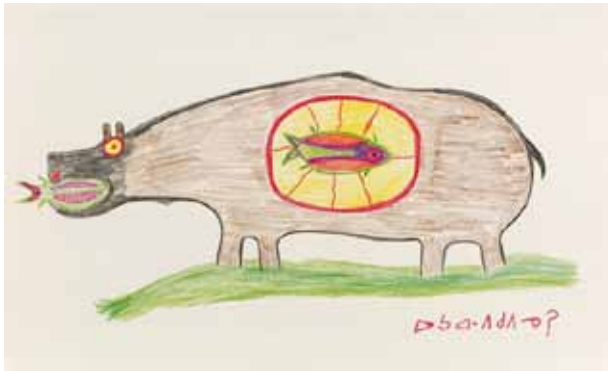
Fox And Fish Theme, c. 1966



Lord Of The Water World, c. 1966



Shaman With Two Faces, c. 1966



Hungry Bear, c. 1966



Bear Walker, c. 1966



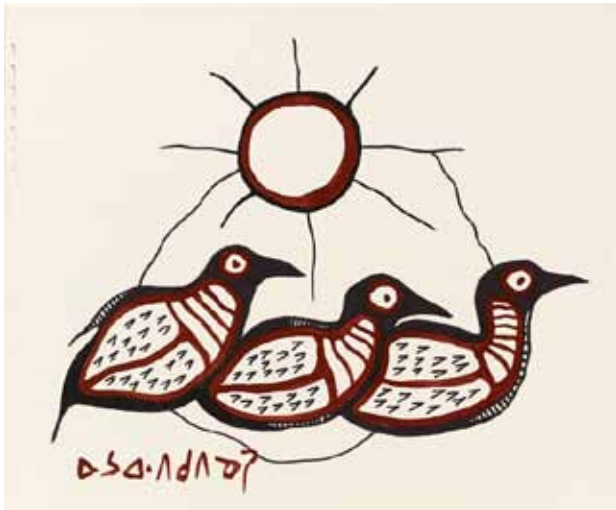
Family Totem, c. 1960-64



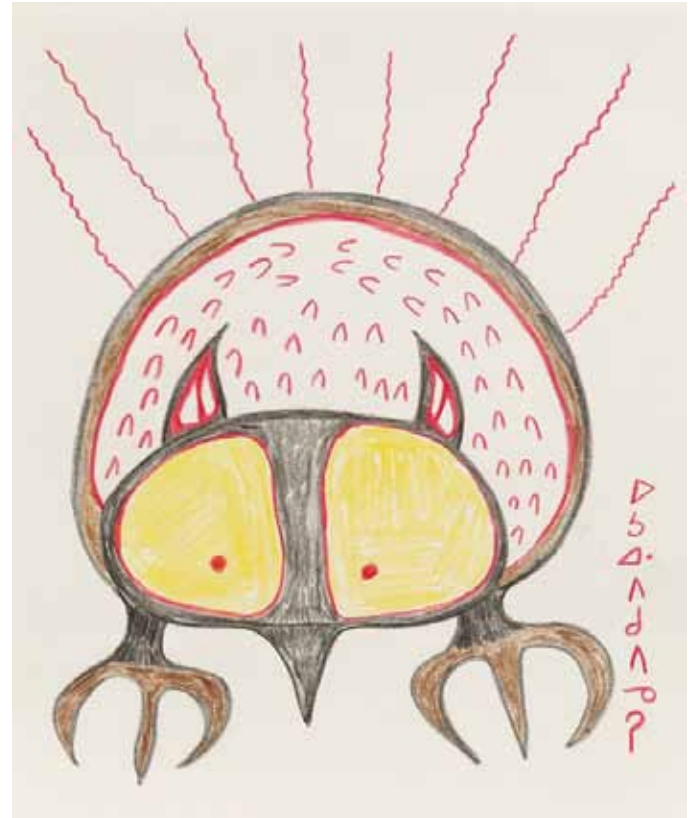
Curious Owls, c. 1966



Beaver Legend With Shaking Tent, c. 1966



Birds In A Row, c. 1966



Owl Wisdom, c. 1966



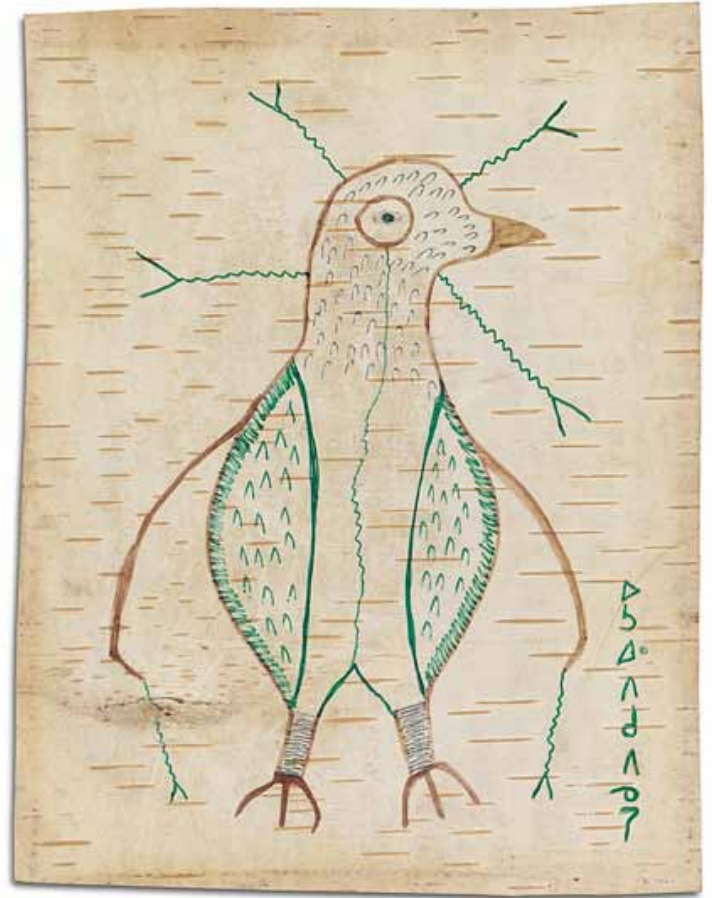
Moose With Shaking Tent, c. 1966



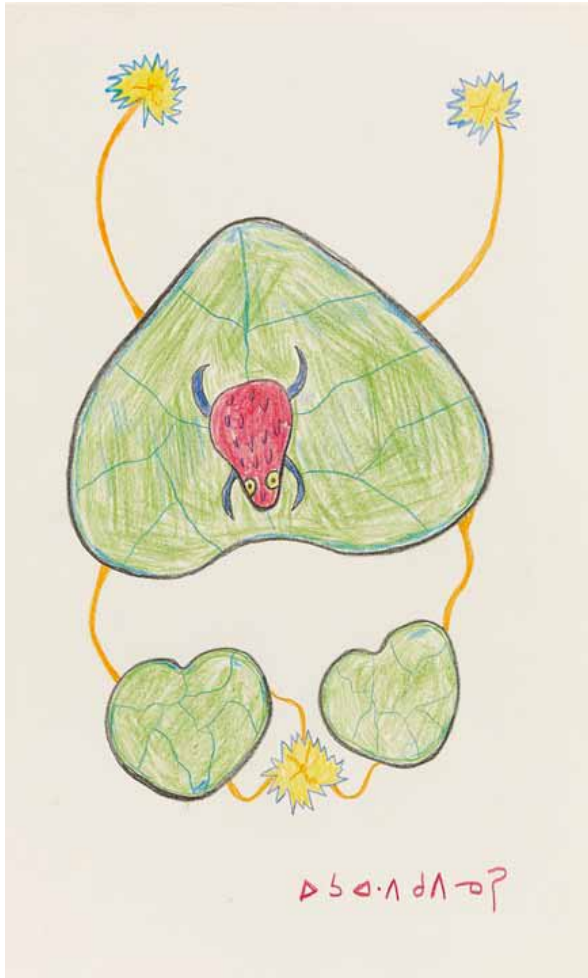
Nesting Loon, c. 1966



Twins, c. 1966



Thunderbird Young, c. 1966



Lily pads, c. 1966



Fish-Woman, c. 1966



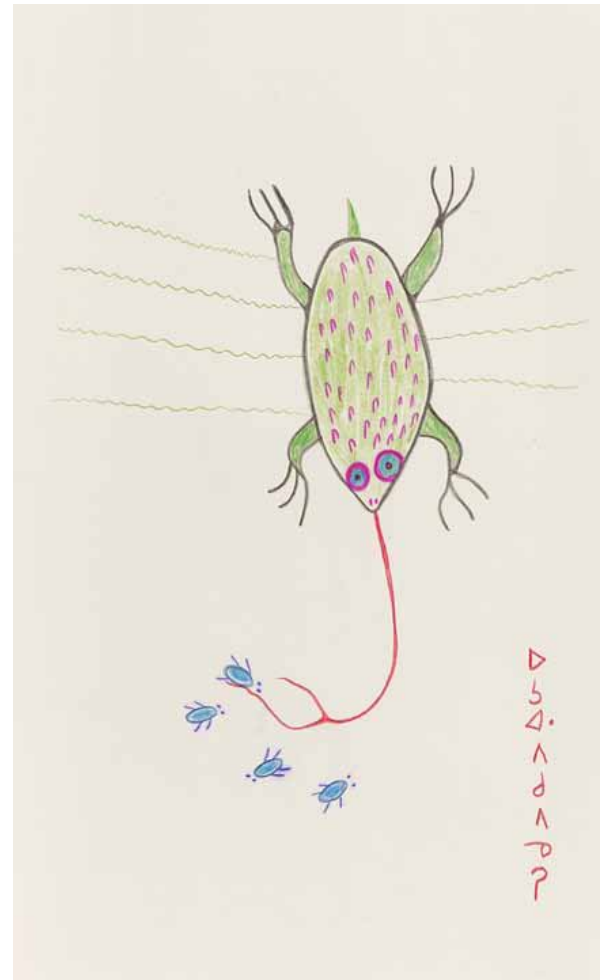
Bear Life Cycle, c. 1966



Bear With Pike, c. 1966



Game Bird - Cycle Of Life, c. 1966



Feeding Frog, c. 1966

EXHIBITION WORKS

Bear Life Cycle, c. 1966. Ink on birch bark, 6 x 7.5 in, 15.24 x 19.05 cm

By descent - Collection of Millie Anderson, Kenora; Collection of Alfred Sawkins, Kenora;
Acquired from the artist.

Bear Walker, c. 1966. Pencil crayon on Gestetner paper, 7 x 8.5 in, 17.78 x 21.59 cm

By descent - Collection of Kathy Anderson, Kenora; Collection of Alfred Sawkins, Kenora;
Acquired from the artist.

Bear With Pike, c. 1966. Ink on birch bark, 5.5 x 5.5 in, 13.97 x 13.97 cm

By descent - Collection of Millie Anderson, Kenora; Collection of Alfred Sawkins, Kenora;
Acquired from the artist.

Beaver Legend With Shaking Tent, c. 1966. Pencil crayon on Gestetner paper, 8.5 x 14 in,
21.59 x 35.56 cm

By descent - Collection of Kathy Anderson, Kenora; Collection of Alfred Sawkins, Kenora;
Acquired from the artist.

Birds And Insects, c. 1966. Acrylic on watercolour paper, 14 x 17 in, 35.56 x 43.18 cm

By descent - Collection of Kathy Anderson, Kenora; Collection of Alfred Sawkins, Kenora;
Acquired from the artist.

Birds In A Row, c. 1966. Acrylic on watercolour paper, 14 x 17 in, 35.56 x 43.18 cm

By descent - Collection of Kathy Anderson, Kenora; Collection of Alfred Sawkins, Kenora;
Acquired from the artist.

Birds Nesting, c. 1966. Acrylic on watercolour paper, 14 x 17 in, 35.56 x 43.18 cm

By descent - Collection of Kathy Anderson, Kenora; Collection of Alfred Sawkins, Kenora;
Acquired from the artist.

Blue Eggs, c. 1966. Pencil crayon on Gestetner paper, 7 x 8.5 in, 17.78 x 21.59 cm

By descent - Collection of Kathy Anderson, Kenora; Collection of Alfred Sawkins, Kenora;
Acquired from the artist.

Curious Owls, c. 1966. Pencil crayon on Gestetner paper, 8.5 x 14 in, 21.59 x 35.56 cm

By descent - Collection of Kathy Anderson, Kenora; Collection of Alfred Sawkins, Kenora;
Acquired from the artist.

Family Totem, c. 1960-64. Acrylic on watercolour paper, 30 x 21.75 in, 76.2 x 55.25 cm

By descent - Collection of Linda Ard, Saskatchewan; Collection of Walter Ard, Red Lake;
Acquired from the artist.

Feeding Frog, c. 1966. Pencil crayon on Gestetner paper, 14 x 8.5 in, 35.56 x 21.59 cm

By descent - Collection of Kathy Anderson, Kenora; Collection of Alfred Sawkins, Kenora;
Acquired from the artist.

Fish Woman, c. 1966. Ink on birch bark, 5 x 7.5 in, 12.7 x 19.05 cm

By descent - Collection of Millie Anderson, Kenora; Collection of Alfred Sawkins, Kenora;
Acquired from the artist.

Fox And Fish Theme, c. 1966. Acrylic on watercolour paper, 23 x 29.5 in, 58.42 x 74.93 cm

By descent - Collection of Millie Anderson, Kenora; Collection of Alfred Sawkins, Kenora;
Acquired from the artist.

Game Bird - Cycle Of Life, c. 1966. Ink on birch bark, 5.75 x 8.125 in, 14.61 x 20.64 cm

By descent - Collection of Kathy Anderson, Kenora; Collection of Alfred Sawkins, Kenora;
Acquired from the artist.

Hungry Bear, c. 1966. Pencil crayon on Gestetner paper, 8.5 x 14 in, 21.59 x 35.56 cm

By descent - Collection of Kathy Anderson, Kenora; Collection of Alfred Sawkins, Kenora;
Acquired from the artist.

Liypads, c. 1966. Pencil crayon on Gestetner paper, 14 x 8.5 in, 35.56 x 21.59 cm

By descent - Collection of Kathy Anderson, Kenora; Collection of Alfred Sawkins, Kenora;
Acquired from the artist.

Loons Swimming, c. 1966. Pencil crayon on Gestetner paper, 8.5 x 14 in, 21.59 x 35.56 cm

By descent - Collection of Kathy Anderson, Kenora; Collection of Alfred Sawkins, Kenora;
Acquired from the artist.

Lord Of The Water World, c. 1966. Pencil crayon on Gestetner paper, 14 x 8.5 in, 35.56 x 21.59 cm

By descent - Collection of Kathy Anderson, Kenora; Collection of Alfred Sawkins, Kenora;
Acquired from the artist.

Moose With Shaking Tent, c. 1966. Ink on birch bark, 5 x 7.5 in, 12.7 x 19.05 cm

By descent - Collection of Millie Anderson, Kenora; Collection of Alfred Sawkins, Kenora;
Acquired from the artist.

Mystical Thunderbird, c. 1960-64. Acrylic on watercolour paper, 21.75 x 29.75 in, 55.25 x 75.57 cm

By descent - Collection of Linda Ard, Saskatchewan; Collection of Walter Ard, Red Lake;
Acquired from the artist.

Nesting Loon, c. 1966. Ink on birch bark, 4.75 x 7.75 in, 12.06 x 19.69 cm

By descent - Collection of Kathy Anderson, Kenora; Collection of Alfred Sawkins, Kenora;
Acquired from the artist.

Ojibwa Midawin Sacred Bear, c. 1959-62. Acrylic on watercolour paper, 22 x 30 in, 55.88 x 76.2 cm

The Pollock Gallery, Toronto (Exhibited at the Four Seasons); Acquired from the artist.

Owl Wisdom, c. 1966. Pencil crayon on Gestetner paper, 8.5 x 7 in, 21.59 x 17.78 cm

By descent - Collection of Kathy Anderson, Kenora; Collection of Alfred Sawkins, Kenora;
Acquired from the artist.

Owl With Power Lines, c. 1966. Acrylic on watercolour paper, 17 x 14 in, 43.18 x 35.56 cm

By descent - Collection of Kathy Anderson, Kenora; Collection of Alfred Sawkins, Kenora;
Acquired from the artist.

Sacred Owl, c. 1966. Ink on birch bark, 5.25 x 4.375 in, 13.34 x 11.11 cm

By descent - Collection of Kathy Anderson, Kenora; Collection of Alfred Sawkins, Kenora;
Acquired from the artist.

Shaman With Two Faces, c. 1966. Pencil crayon on Gestetner paper, 14 x 8.5 cm, 35.56 x 21.59 cm

By descent - Collection of Kathy Anderson, Kenora; Collection of Alfred Sawkins, Kenora;
Acquired from the artist.

There Was An Old Woman Who Was So Strongly Attached To The Power of His Spirit Protector The

Huge Serpent, c. 1960-64. Acrylic on watercolour paper, 29.75 x 21.75 in, 75.57 x 55.25 cm
By descent - Collection of Linda Ard, Saskatchewan; Collection of Walter Ard, Red Lake;
Acquired from the artist.

Three Birds Nesting, c. 1966. Pencil crayon on Gestetner paper, 8.5 x 14 in, 21.59 x 35.56 cm
By descent - Collection of Kathy Anderson, Kenora; Collection of Alfred Sawkins, Kenora;
Acquired from the artist.

Three Birds With Peace Sun, c. 1966. Acrylic on watercolour paper, 14 x 17 in, 35.56 x 43.18 cm
By descent - Collection of Kathy Anderson, Kenora; Collection of Alfred Sawkins, Kenora;
Acquired from the artist.

Three Herons In Reeds, c. 1966. Pencil crayon on Gestetner paper, 14 x 8.5 in, 35.56 x 21.59 cm
By descent - Collection of Kathy Anderson, Kenora; Collection of Alfred Sawkins, Kenora;
Acquired from the artist.

Thunderbird God, c. 1966. Acrylic on kraft paper, 35 x 19 in, 88.9 x 48.26 cm
By descent - Collection of Millie Anderson, Kenora; Collection of Alfred Sawkins, Kenora;
Acquired from the artist.

Thunderbird Young, c. 1966. Ink on birch bark, 6.75 x 5.125 in, 17.15 x 13.02 cm
By descent - Collection of Millie Anderson, Kenora; Collection of Alfred Sawkins, Kenora;
Acquired from the artist.

Twins, c. 1966. Ink on birch bark, 4 x 5 in, 10.16 x 12.7 cm
By descent - Collection of Millie Anderson, Kenora; Collection of Alfred Sawkins, Kenora;
Acquired from the artist.

Twin Eggs Hatching, c. 1966. Pencil crayon on Gestetner paper, 7 x 8.5 in, 17.78 x 21.59 cm
By descent - Collection of Kathy Anderson, Kenora; Collection of Alfred Sawkins, Kenora;
Acquired from the artist.

COLLECTOR PROFILES

Alfred Sawkins worked at Walkey's Drug Store in Kenora as the pharmacist in 1973. He married the town's head librarian, Rosellyn, in 1969. They both knew Norval Morrisseau and would lend him a few dollars from time to time, which he would repay either with a small drawing or cash, when he had it. Rosellyn would chat with Norval while he sat on the library steps creating his art. Alfred and Rosellyn became very fond of Morrisseau's artwork and various pieces hung in their homes in Kenora, Sarnia and Dunnville. After Rosellyn passed away, Alfred moved back to Kenora where his Norval Morrisseau hung in his living room.

Walter Ard taught at the Saugeen School, Savant Lake, Ontario from Sept 1949 to June 1950 and at the St. Clair Day School (destroyed by fire) near Sarnia from Sept 1950 to June 1951. After a period at Renabie Gold Mines, he traveled to Red Lake where he taught at the Red Lake School. It was during this time that he acquired his paintings from Norval Morrisseau in the late 1950s and early 1960s.

ON THE COVER: *Mystical Thunderbird*, c. 1960-64

Printing by F.W. Barrett. Printed in Canada
Graphic Design by Dale Barrett

Art copyright © 2011 Norval Morrisseau Estate.
Photography © 2011 Michael Cullen/Trent Photographics

All rights reserved.

No part of this catalogue covered by the copyrights herein may be reproduced or copied in any form or by any means—electronic, graphic, digital or mechanical, including photocopying or information storage & retrieval systems—without the express prior written permission of the publisher.

KINSMAN ROBINSON GALLERIES

108 Cumberland Street
Toronto, ON, Canada M5R 1A6

T: 416-964-2374
info@kinsmanrobinson.com
www.kinsmanrobinson.com